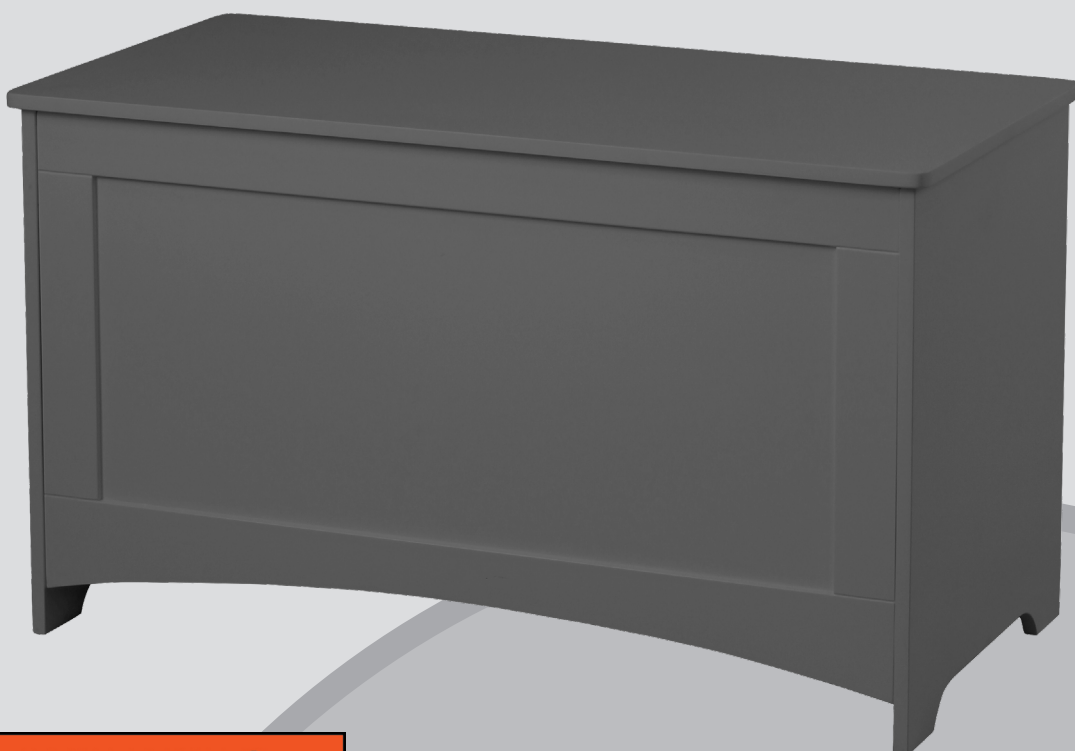


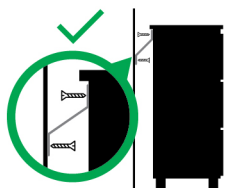
HOMEBASE

TOY CHEST

INSTRUCTION MANUAL



⚠ WARNING



Children have died from furniture tipover.

- ALWAYS secure this furniture with an anchor device.
- NEVER allow children to stand, climb or hang on drawers, doors, or shelves.
- NEVER open more than one drawer at a time.
- Place heavy items down low.

NEVER put a TV
on this furniture



IMPORTANT: Please read these instructions before using the product and retain for future use.

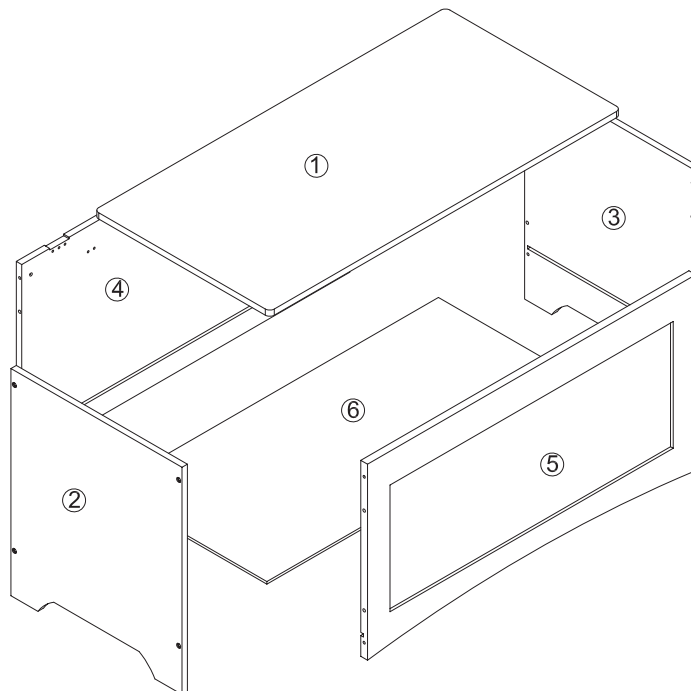
V1_2024

SAFETY & CARE ADVICE

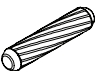
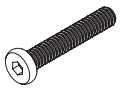


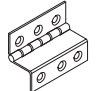

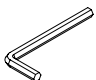


Please read these instructions fully before starting assembly and retain for future reference.

- This product is not a toy
- This product is suitable for children 3+ years
- Check you have all the components and tools listed before you start assembly.
- Remove all fittings from the plastic bags and separate them into their groups.
- Keep children and animals away from the work area; small parts could pose a choking hazard if swallowed.
- Make sure you have enough space to lay out the parts before starting.
- Do not stand or put weight on the component parts or the product, as this could cause damage.
- Assemble on a soft, level surface to avoid damaging the unit or your floor.
- We do not recommend the use of power drills/drivers for inserting screws during assembly, as this could damage the unit.
Only use hand screwdrivers.
- Dispose of all packaging carefully and responsibly.
- Domestic use only.
- Ensure that hands and fingers are clear when closing the lid
- Maximum weight loading in main compartment is 10kg (evenly distributed).

COMPONENTS



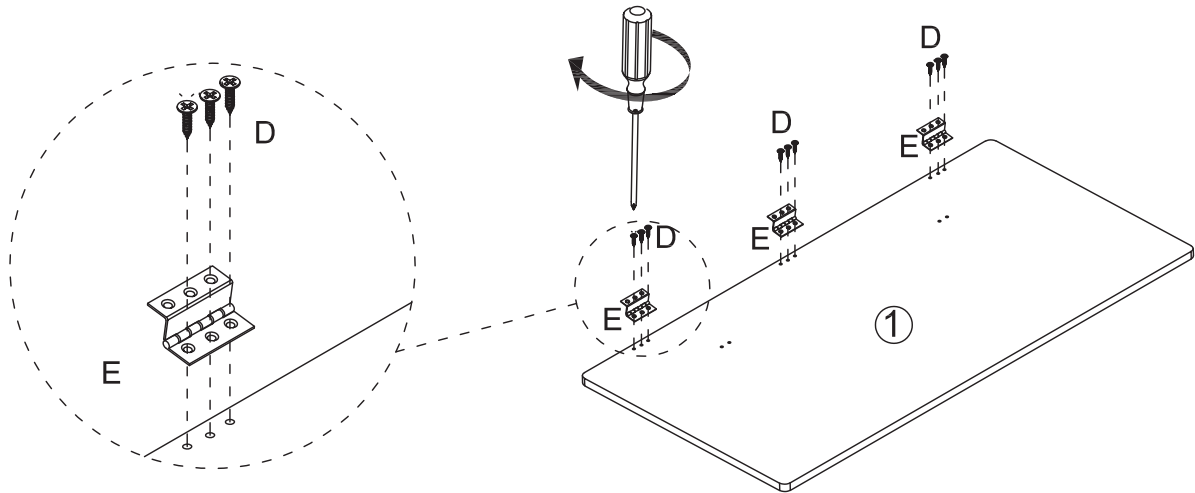
FITTINGS

<p>(A)</p>  <p>Dowels x 8</p>	<p>(B)</p>  <p>Screws x 8</p>	<p>(C)</p>  <p>Dowel nuts x 8</p>	<p>(D)</p>  <p>Screws x 18</p>
<p>(E)</p>  <p>Hinges x 3</p>	<p>(F)</p>  <p>Hinges x 2</p>	<p>(G)</p>  <p>Allen key x 1</p>	<p>(H)</p>  <p>Screws x 8</p>
<p>(I)</p>  <p>Cover stickers x 16</p>			

ASSEMBLY INSTRUCTIONS

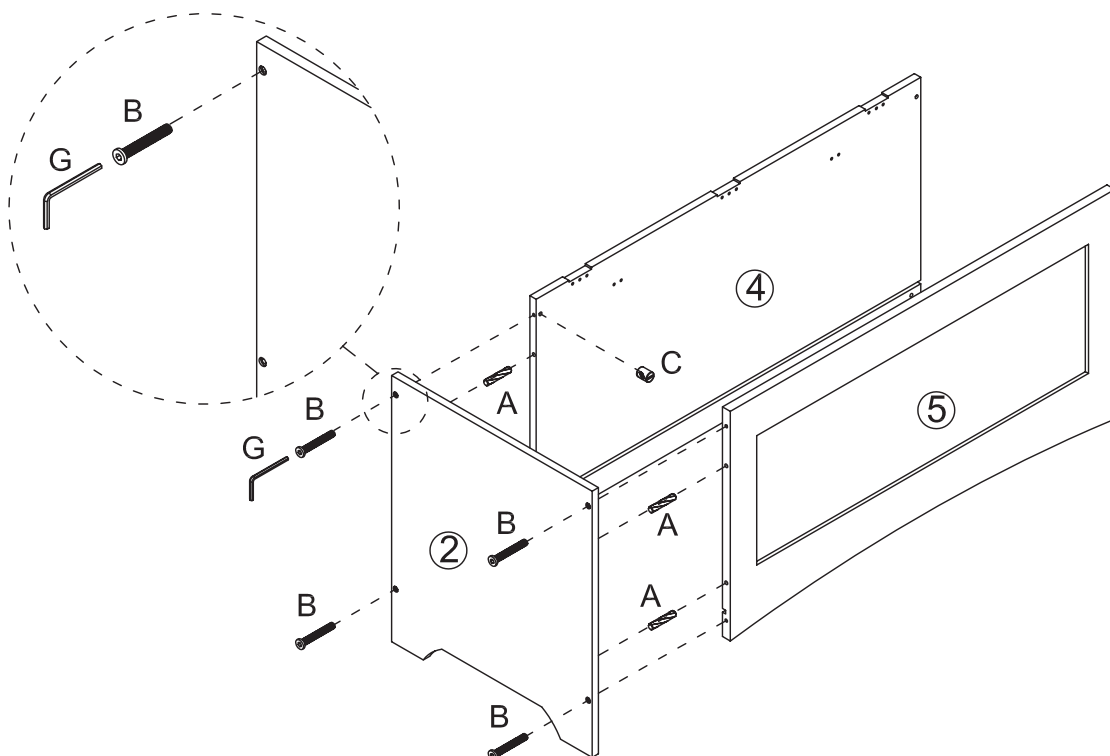
Step 1

Attach 3 x hinges (E) to lid (1) using 9 x screws (D).



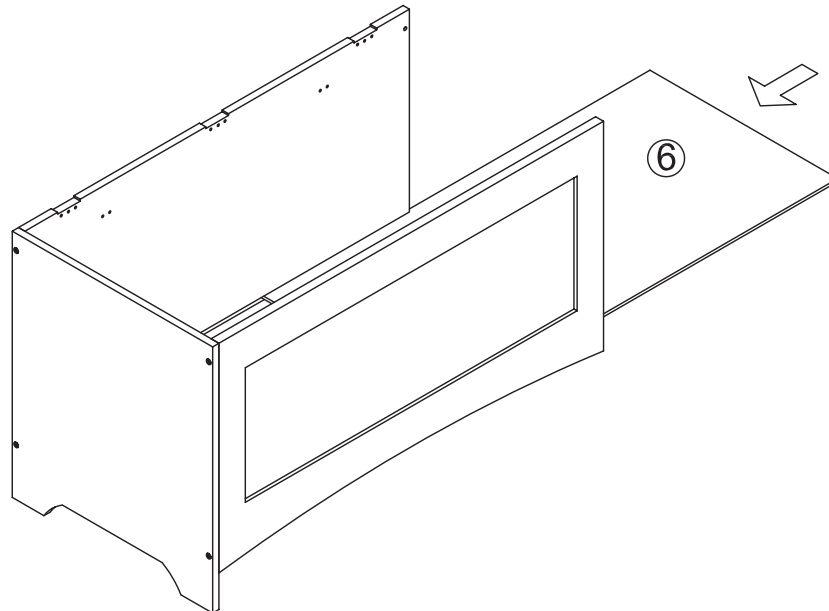
Step 2

Attach side panel (2) to front and back panels (4 & 5) using 4 x wooden dowels (A).
Secure with 4 x dowel nuts (C) and 4 x screws (B).



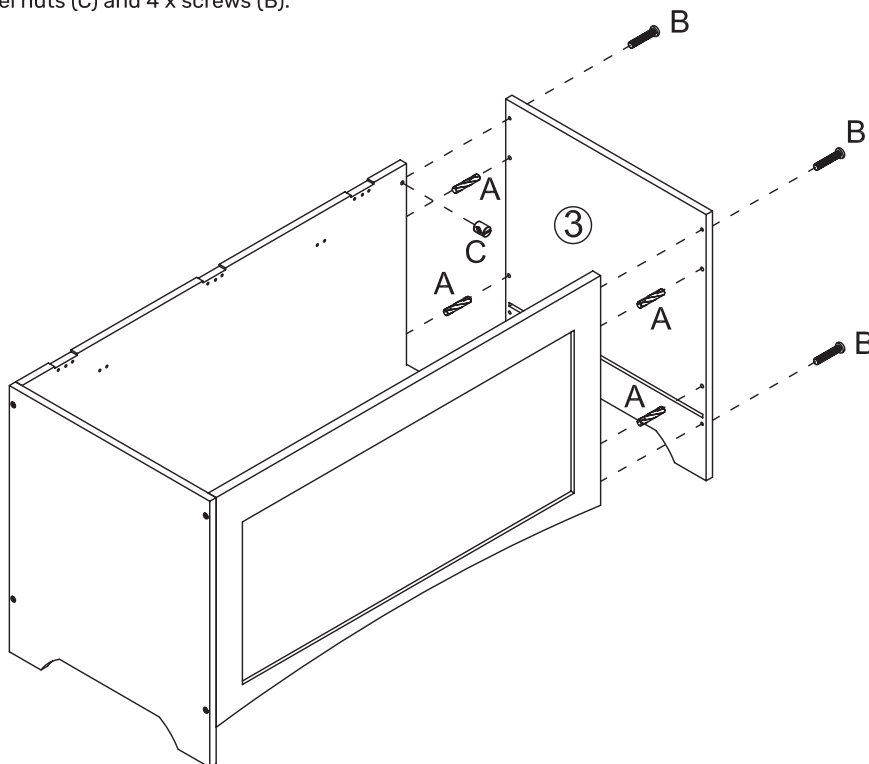
Step 3

Insert base panel (6) into the partially assembled unit.



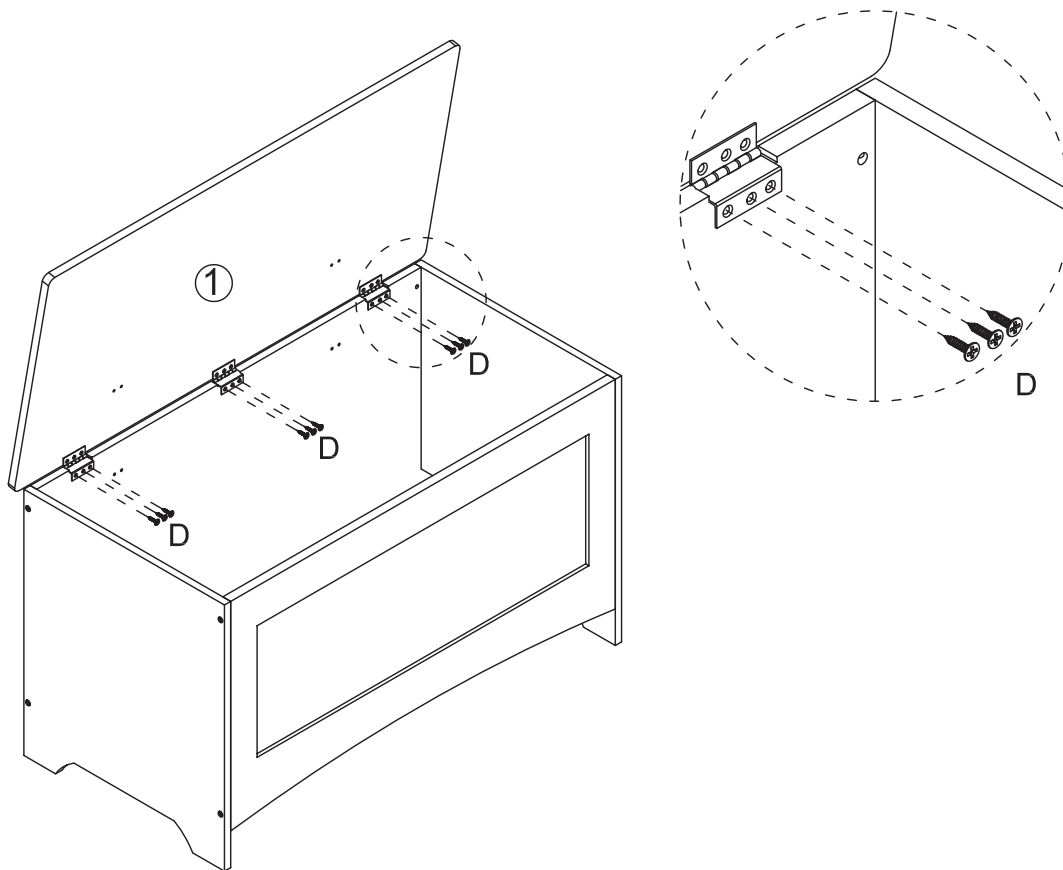
Step 4

Attach side panel (3) to the partially assembled unit using 4 x wooden dowels (A).
Secure with 4 x dowel nuts (C) and 4 x screws (B).



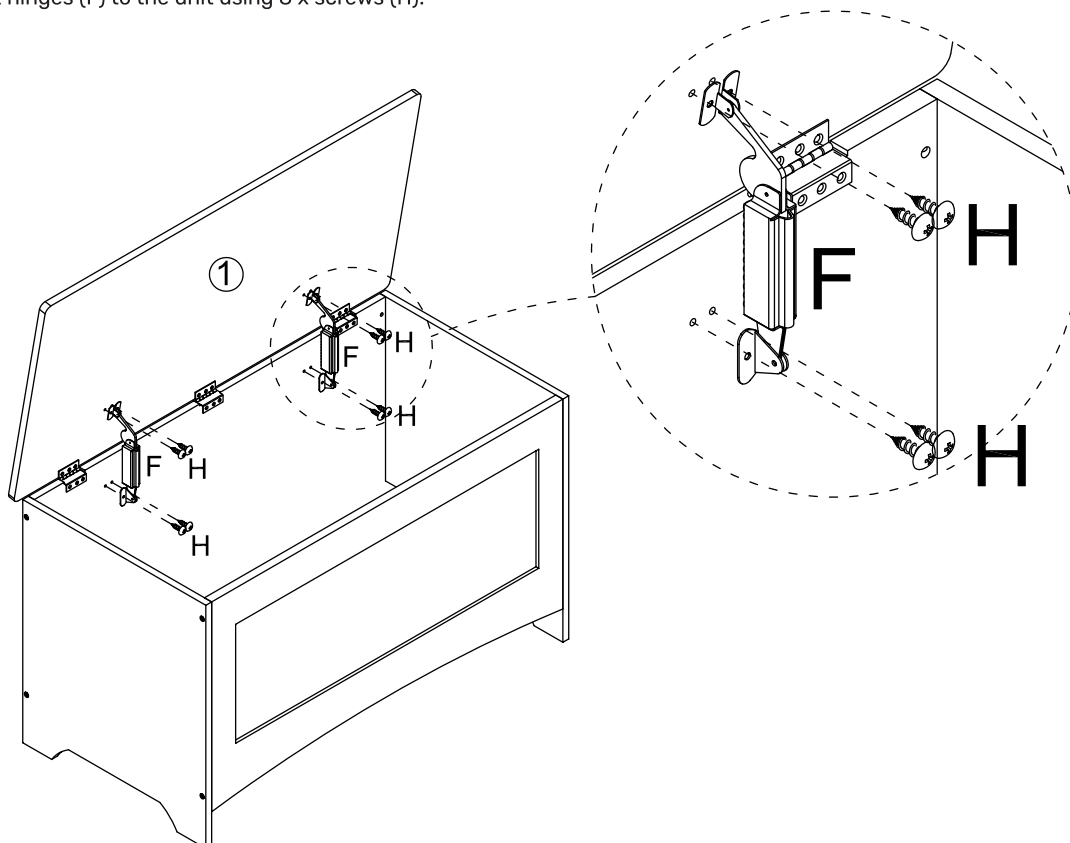
Step 5

Secure the lid hinges to the unit using 9 x screws (D).



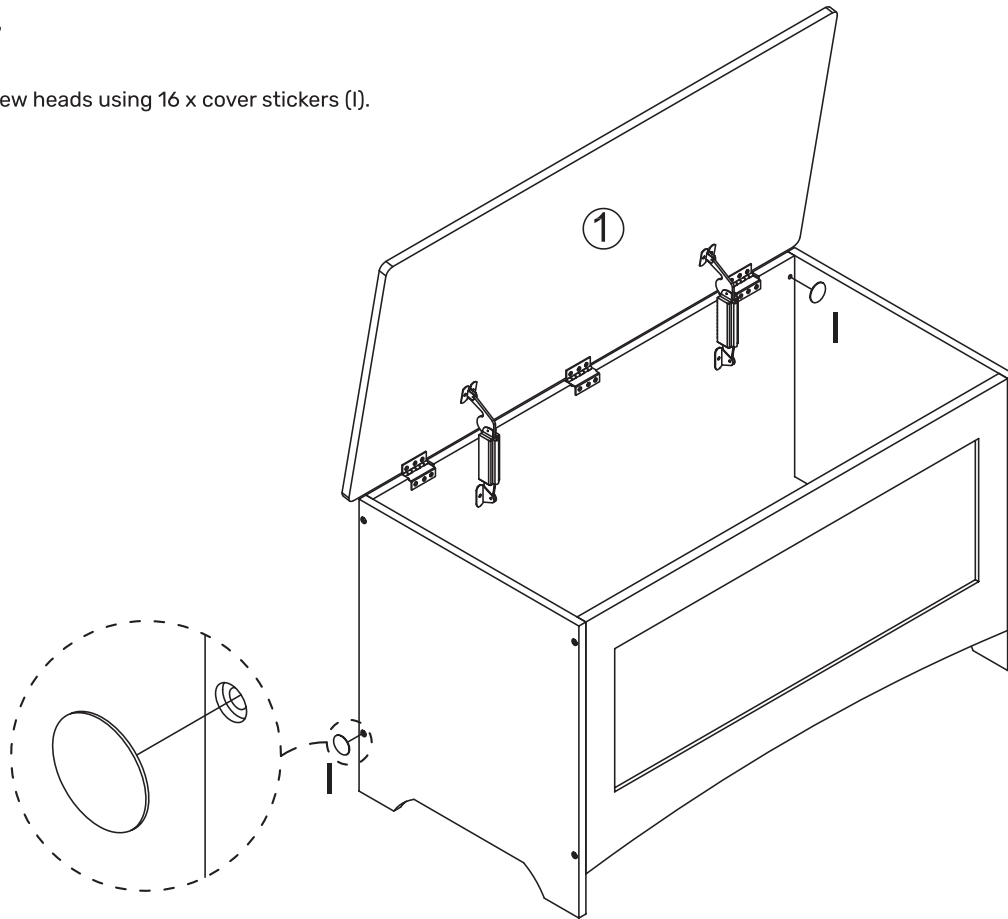
Step 6

Attach 2 x hinges (F) to the unit using 8 x screws (H).

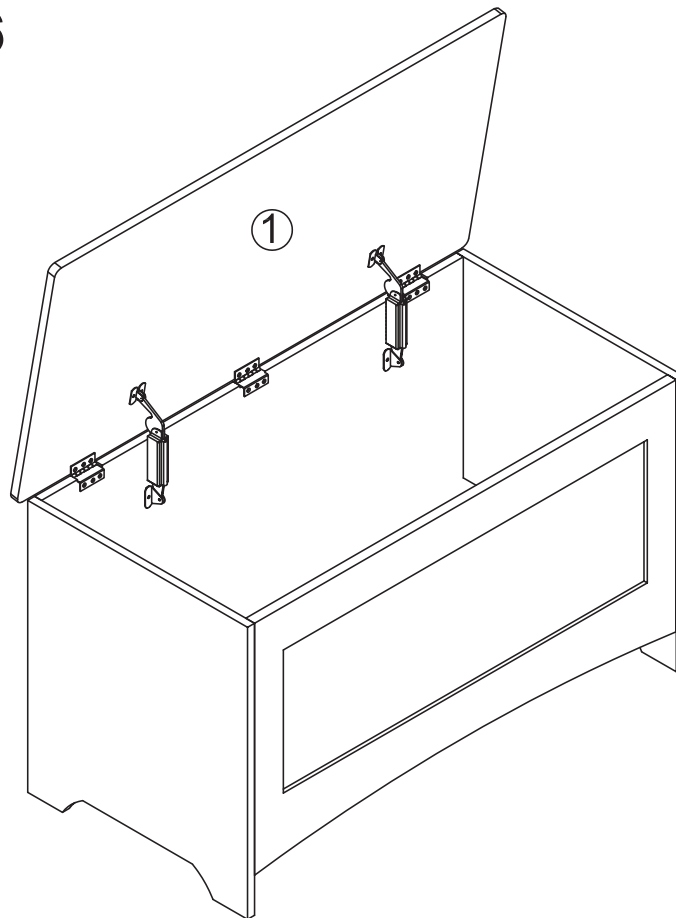


Step 7

Cover screw heads using 16 x cover stickers (I).



I x 16



ASSEMBLY COMPLETE